

## 2007 Interlibrary Loan Survey Report Colorado Council of Medical Librarians (CCML)

Submitted by the CCML Library Cooperation Committee:

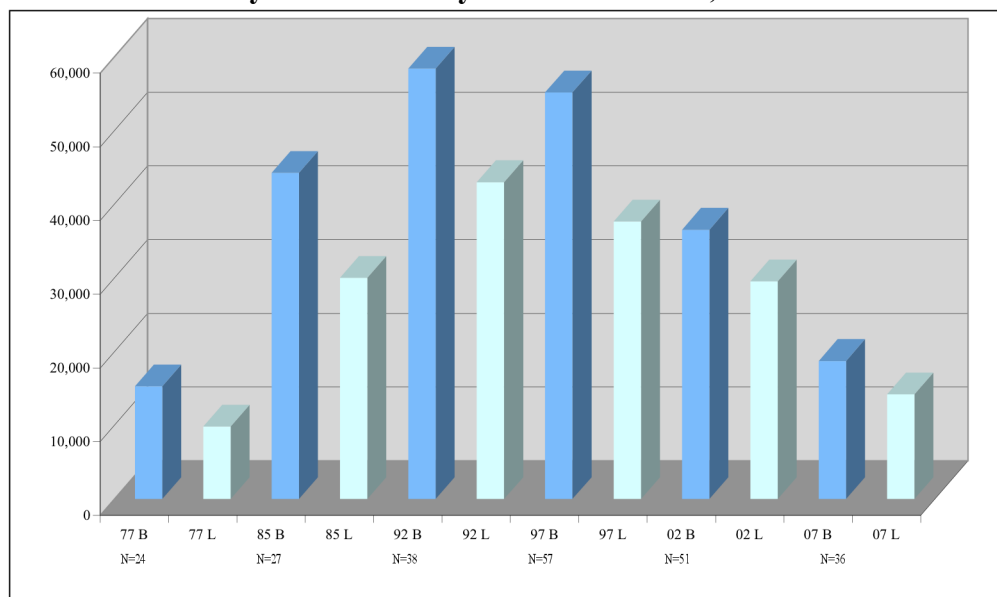
Sara Katsh Committee Chair, Members: Margaret Bandy, Sean Crow, Rosalind Dudden (data analysis), Sharon Martin, Teresa Mullins, Jenny Stevens, Carmen Urich

### Introduction

This survey is the seventh in a series of CCML interlibrary loan (ILL) activity surveys. Forty libraries participated in this survey of 2007 interlibrary loan data. There were 36 Primary Access Libraries (PALs), the two university libraries from Colorado and Wyoming that act as the states' Resource Libraries, one other university library and a corporate library that due to its large activity was considered an outlier.

The National Network of Libraries of Medicine (NN/LM) has designated Primary Access Libraries (PALs) to include hospital libraries and all other network member libraries that are not Resource Libraries. They generally represent the health professional's first point of access into NN/LM. These libraries are encouraged to develop adequate resources to respond to their users' basic information needs and to cooperate with other local libraries to share resources among themselves before sending requests to Resource Libraries.

**Chart 1**  
**ILL Activity of the Primary Access Libraries, 1977 - 2007**



(B)orrowing/(L)ending - Year:	77 B	77 L	85 B	85 L	92 B	92 L	97 B	97 L	02 B	02 L	07 B	07 L
Total:	15,291	9,817	44,238	30,008	58,380	42,973	55,159	37,631	36,533	29,519	18,733	14,190
% of Change:			189%	206%	32%	43%	-6%	-12%	-34%	-22%	-49%	-52%
Number of Participants:	N=24		N=27		N=38		N=57		N=51		N=36	
Transactions per library	637	409	1,638	1,111	1,536	1,131	968	660	716	579	520	394
% of Change			157%	172%	-6%	2%	-37%	-42%	-26%	-12%	-27%	-32%

As indicated in Chart 1, in 2007, the PALs group borrowed 18,733 documents and loaned 14,190, using DOCLINE and OCLC. There is a corresponding 49% and 52% decline in activity

## 2007 Interlibrary Loan Survey Report Colorado Council of Medical Librarians (CCML)

since 2002. Fifteen libraries closed between 2002 and 2007. Closing PALs has been a problem for the profession. The table line, transactions per library was added. The decline in 1997 may be because so many small libraries were added to the survey. As these small libraries closed, this figure continued to decline, probably due to the nationwide trend of declining ILL figures, often attributed to the purchase of electronic journal aggregations. This report analyzes the data and makes recommendations for improved efficiency of interlibrary loan services.

### Background

Copies of all six previous surveys have been archived on CCMLNet. (See <http://www.ccmlnet.org/ILL/index.html>)

Sue A. O'Neill, a library science graduate student at the University of Denver, conducted the first CCML ILL survey in 1977 for her master's thesis project. Completed before the existence of electronic borrowing/lending systems, this early effort nonetheless established methodology that would be repeated in subsequent surveys.

The second CCML survey, based on 1981-1985 ILL data, reflected the use of electronic borrowing/lending mechanisms for the first time. These included OCTANET, Region 4's precursor to DOCLINE, and Mile High Mail, an early electronic messaging system used by many CCML members to request ILLs. The CCLS courier service (now Colorado Library Courier), also introduced during this five-year period, was used to expedite delivery of ILL materials. The study included a thirty-question survey used to document ILL procedures and to determine the concerns of CCML members regarding ILL.

Reported in the July 1991 issue of *Council Quotes*, the third survey was based on 1990 CCML ILL data, reflecting the first full year of DOCLINE use. It was estimated that DOCLINE, introduced in 1989, accounted for 85% - 90% of all ILL activity among CCML member libraries in 1990. Data for items requested via fax, mail, OCLC, and telephone were not included. This survey focused on how CCML libraries were integrating DOCLINE into ILL procedures and processes. Data analysis yielded recommendations for using DOCLINE more efficiently, including a suggested CCML DOCLINE routing table. The data from the 1990 survey are not included in this report as they were so close to the next survey in 1992. The 1992 survey started a series of surveys that collected data every five years.

The fourth survey was based on 1992 CCML ILL data; results were published in the September 1993 issue of *Council Quotes*. Unlike the previous surveys, this survey included OCLC in addition to DOCLINE borrowing/lending statistics and represented 95% of all CCML ILL activity.

The fifth survey was based on 1997 CCML ILL data. Fifty-four libraries participated in this survey, including 57 Primary Access Libraries (PALs) and four university libraries from Colorado and Wyoming. Wyoming was included for the first time. The survey included eleven tables, including three net-borrowing and net-lending tables as well as extensive commentary on the use of DOCLINE. Members are referred to the archived copy for information on such things as the impact of unfilled and non-receipted DOCLINE requests.

The sixth CCML survey described data collected in 2002. Fifty-one primary access libraries participated. While electronic journals started for many libraries around 2000, in 2002 many primary access libraries were not fully electronic. There still was a decline in activity. Where libraries borrowed from also shifted with new features of DOCLINE that allowed for borrowing from more libraries. Chart 2 shows comparative data from six of the seven surveys for 11 libraries that have participated in the seven surveys.

**2007 Interlibrary Loan Survey Report  
Colorado Council of Medical Librarians (CCML)**

**Chart 2  
11 Libraries for which data exist, 1977-2007**

	77	85	92	97	02	07	
<b>Borrowed</b>	8,027	22,005	23,935	22,358	14,956	16,042	AORN
% of change		174%	9%	-7%	-33%	7%	Centura St. Anthony Hospital CO Mental Health Inst Pueblo Denv Med Libr Pres/St. Luke's Med Ctr
<b>Loaned</b>	5,633	18,542	19,592	18,869	12,313	5,990	Exempla St. Joseph Hospital Exempla Lutheran Medical Center
% of change		229%	6%	-4%	-35%	-51%	National Jewish Health Porter Adventist Hospital Rose Medical Center St. Mary's Hospital & Medical Center VA Medical Center – Denver

### Review of Previous Reports

The CCML Library Cooperation Committee recommends that librarians new to DOCLINE and medical library interlibrary loan procedures review the 1997 and 2002 reports on the CCML website (<http://www.ccmlnet.org/ILL/index.html>) and the articles that resulted from analysis of the 1997 data. (Available on PubMed Central: Dudden RF, Coldren S, Condon JE, Katsh S, Reiter CM, Roth PL. Interlibrary loan in primary access libraries: challenging the traditional view. *Bull Med Libr Assoc.* 2000 Oct;88(4):303-13.) From the surveys, new librarians can learn about some of the DOCLINE procedures and recommendations that are not analyzed in this report.

The article referenced above studies three hypotheses. The results show that CCML primary access libraries comply with the recommended guideline to emphasize local borrowing by supplying each other with the majority of their ILLs, instead of overburdening libraries located at higher levels in the ILL hierarchy (H1). The closures of two CCML primary access libraries appear to have affected the entire ILL system, resulting in a greater volume of ILL activity for the state resource library and other DOCLINE libraries higher up in the ILL hierarchy and highlighting the contribution made by CCML primary access libraries (H2). CCML primary access libraries borrow and lend in amounts that are proportional to their collection size, rather than overtaxing libraries at higher levels in the ILL hierarchy with large numbers of requests (H3).

### Selection of Participants

The current survey is based on 2007 DOCLINE and OCLC data for CCML libraries. To identify potential survey participants, the NLM DOCLINE Institution records were searched, yielding 187 records for libraries in Colorado and Wyoming. Of the libraries identified, 51 were active libraries and therefore candidates for the survey. Of note, 5 libraries from our previous survey were newly listed as closed, and therefore non-candidates, with one new library added as active. This put 51 libraries in the survey. There were 48 Primary Access Libraries (PALs) and 3 university libraries from Colorado and Wyoming.

In October of 2007, letters of agreement soliciting survey participation were mailed to the 51 active Colorado and Wyoming libraries, offering a choice of the following levels of participation:

## 2007 Interlibrary Loan Survey Report Colorado Council of Medical Librarians (CCML)

- **Local Participation:** The library's name and statistics can appear in the survey report and in the tables of the *Council Quotes* but will be blinded in any additional publications and will be called Library A or Library B, etc.
- **Blinded Participation:** The library's statistics will appear in the survey report and in the tables of *Council Quotes*, but will be blinded in both and will be called Library A or Library B, etc.

Of these 51 libraries, 33 agreed to local participation in the study and 7 agreed to blinded participation, for a total of 40 libraries. Eleven libraries did not participate.

### Data Collection

Participants were sent instructions on how to download their DOCLINE data from the website for the calendar year 2007 and put them into Excel. Sean Crow from National Jewish was hired to help the committee with the data acquisition and merging. If a library could not provide their files for technological reasons, Sean downloaded the data. Sean then merged the four Excel files from each of the 40 libraries into 4 Excel files for analysis. Rosalind Dudden analyzed the four files using the Excel pivot table utility and produced the columns of data used in the charts. Rosalind then collected and merged the OCLC data into the Excel files. OCLC has a utility that can gather data from groups of libraries. BCR helped find the libraries that were needed.

### Summary of the Tables and Data Analysis for 2007

*Table 1* and *Table 2* provide overviews of the total 2007 DOCLINE and OCLC borrowing/lending activity of the participating libraries. These data, which reflect ILL activity between participating libraries and all of their borrowing/lending partners, not just within the group of participants, are sorted and ranked by the numbers of items borrowed (*Table 1*) and loaned (*Table 2*).

*Table 3* provides net borrower and net lender designations for the participating libraries. Net lender libraries are libraries that lend a greater number of items than they borrow; net borrower libraries borrow more than they lend. *Table 3* is based on DOCLINE data only. OCLC data were not included in this table because only total OCLC borrows and loans were available. ILL activity with libraries outside the group of 37 libraries is excluded from these tables. Library G, while an outlier in *Tables 1* and *2*, is included in *Table 3* because in this context they are not outliers.

Column D in *Table 3* shows the borrowing/lending ratio for each library. This ratio is determined by dividing the number of items borrowed (Column A) by the sum of the number of items borrowed (Column A) plus the number of items loaned (Column B).

For example, in *Table 3*, the National Jewish Health Library (#3) has a borrowing/lending ratio of 0.12 (77/ [577+77]). In other words, 12% of NJH total ILL activity involved borrowing, while lending accounted for 88% of its total ILL activity, making NJH a DOCLINE net lender. The borrowing/lending ratio of the institutions located within the highlighted rectangle is considered balanced, since their borrowing/lending ratios are between 40% and 60%. These libraries lend approximately as much as they borrow. Column E shows each individual library's ILL activity, expressed as a percentage of the group's total activity. Libraries with large collections or specialized resources, such as NJHealth are likely to be net lenders, while hospital

## 2007 Interlibrary Loan Survey Report Colorado Council of Medical Librarians (CCML)

libraries with small core collections will be net borrowers.

*Table 4*, which excludes OCLC data, arranges 2007 DOCLINE borrowing/lending activity according to the geographic distribution of CCML library borrowing/lending partners. For comparison purposes, 1997 and 2002 data are provided. The data in this table show a 60% decrease in the borrowing activity within the CCML PALs from 2002 to 2007. The committee hypothesizes that the decrease in ILL activity is attributable to the purchase of e-journal aggregations that include out-of-scope material that might previously have been borrowed, as well as the reduced number of libraries participating. In previous years in some libraries, a high percentage of borrowing took place to get materials that were at the bindery or missing. These can now be gotten online. This table shows a 32% decrease in total borrowing from 1997-2002 and a 29% decrease from 2002-2007. It shows a 26% decrease in total lending from 1997-2002 and a 55% decrease from 2002-2007. The PALs had a 178% increase in lending to libraries outside the region from 1997-2002 and a 31% decrease from 2002-2007. The introduction of e-journals during this 10-year period is undoubtedly affecting ILL activity and patterns and will continue to do so in the future as the smallest libraries start to participate in the new paradigm.

### Recommendations

DOCLINE routing tables include nine cells, with space for up to 20 institutions in each cell. While you do not need to fill up each cell, you should not be afraid to do so. It is always advisable, as well as courteous, to obtain permission from a library before including it in your routing table. NLM is automatically placed alone in cell 10. NLM reroutes requests nationally after a library's routing table is exhausted.

Because the needs of each library vary, one routing table will not work for every institution; however, the following sample may be adapted for your institution:

Cells 1-4: Place your local resources here. Use Table 3 to consider placing net lenders in the higher cells.

Cell 5: University of Colorado Denver Health Sciences Library – LIBID: COUCOL

Cell 6: Other Region 4 resources libraries - (listed at <http://nmlm.gov/mcr/about/resourcelibs.html>)

Cell 7: Specialty libraries outside Region 4

Cell 8: Other libraries outside Region 4

Cell 9: Other libraries outside Region 4

Cell 10: National Library of Medicine (requests are automatically routed to NLM last)  
LIBID: MDUNLM

### Other considerations for placement in a cell:

**Excluding a local library from the list or putting it in a higher cell.**

- Is the library staffed part-time?

**2007 Interlibrary Loan Survey Report  
Colorado Council of Medical Librarians (CCML)**

- Does the library own a small core collection that has no unique items?  
**Including a library in the list or putting it in a lower cell.**
- Fast service?
- Same specialty as your library?
- Special or reciprocal relationships, locally or nationally?
- DOCLINE FreeShare participant?
- Delivers via e-mail PDF or Ariel?
- Is a member of EFTS, if there is a charge?

Other routing table information can be found with the following tools:

DOCLINE help screens

[http://www.nlm.nih.gov/doctype/doctinehelp/%21SSL%21/WebHelp/DOCLINE\\_Help.htm](http://www.nlm.nih.gov/doctype/doctinehelp/%21SSL%21/WebHelp/DOCLINE_Help.htm)

DOCLINE FAQs

<http://www.nlm.nih.gov/services/faqdoctype.html>

DOCLINE Manual

[http://www.nlm.nih.gov/doctype/doctine\\_manual/DOCLINE\\_Manual-02-10-2008.pdf](http://www.nlm.nih.gov/doctype/doctine_manual/DOCLINE_Manual-02-10-2008.pdf)

For general information on DOCLINE, see this website:

<http://nmlm.gov/rsdd/doctine/> or contact the office of the National Network of Libraries of Medicine/Midcontinental Region. (800-338-7657)

2007 CCML INTERLIBRARY LOAN SURVEY  
 TOTAL DOCLINE AND OCLC COMBINED  
 SORTED BY NUMBER OF ITEMS BORROWED (E)

						A	B	C	D	E	F
			OCLC	DOCLINE		BORROWED DOCLINE	LOANED DOCLINE	BORROWED OCLC	LOANED OCLC	BORROWED TOTAL	LOANED TOTAL
STATE	CITY	INSTITUTION NAME	CODE	LIBID							
<b>PRIMARY ACCESS LIBRARIES</b>											
1	CO	Denver	Porter Adventist Hospital	DVH	COUPMD	2014	996	119	525	2133	1521
2	CO	Denver	Denver Med Libr Pres/St. Luke's Med Ctr	DMJ	COUDMS	1588	682	92	457	1680	1139
3	CO	Denver	Exempla Saint Joseph Hospital	DNJ	COUSDJ	1269	443	57	71	1326	514
4	CO	Ft. Collins	Poudre Valley Health System	CO5	COUZFP	1098	114	34	0	1132	114
5	CO	Denver	Children's Hospital	CYB	COUTCH	982	799	134	86	1116	885
6	CO	Pueblo	Parkview Episcopal Medical Center	CQE	COUPEP	880	468	69	13	949	481
7	CO	Vail	Vail Valley Medical Center		COUVYA	944	63			944	63
8	CO	Wheat Ridge	Exempla Lutheran Medical Center	DND	COULTR	733	481	82	0	815	481
9	CO	Greeley	North Colorado Medical Center	CYF	COUZCY	745	480	13	0	758	480
10	CO	Gr Junct	St. Mary's Hospital and Medical Center	XVY	COUSMG	724	953	18	0	742	953
11	CO	Boulder	Boulder Community Hospital		COUBOU	624	96			624	96
12	CO	Englewood	Swedish Medical Center	DNS	COUZAM	583	544	13	297	596	841
13					Library B	578	69			578	69
14	CO	CO Sprgs	Penrose/St. Francis Health Services	CYG	COUPEA	538	816	25	25	563	841
15	CO	Fort Carson	Evans Army Community Hospital	AMB	COUUGC	442	566	84	230	526	796
16	CO	Pueblo	CO Mental Health Inst Pueblo	CQH	COUPBC	389	207	104	29	493	236
17	CO	Denver	National Jewish Health	DNB	COUZAL	411	842	39	125	450	967
18	CO	CO Sprgs	U.S. Olympic Committee	USO	COUZFR	271	227	88	481	359	708
19					Library C	321	0			321	0
20	CO	Denver	AORN	DNF	COUAON	265	561	39	229	304	790
21	WY	Casper	Wyoming Medical Center		WYUNCY	288	27			288	27
22	CO	Lakewood	Gambro BCT Inc		COUCOB	270	97			270	97
23	CO	Longmont	Longmont United Hospital		COULGM	270	1			270	1
24	CO	Denver	Centura St. Anthony Hospital		COUAHS	253	169			253	169
25	CO	Denver	CO Mental Health Inst Fort Logan		COUZFO	236	94			236	94
26	CO	Gr Junct	Community Hospital - Grand Junction		COUZCF	226	12			226	12
27					Library F	163	1			163	1
28					Library D	140	2			140	2
29					Library E	124	40			124	40
30	WY	Sheridan	VA Medical Center - Sheridan		WYUWVY	113	1459			113	1459
31	CO	Denver	VA Medical Center - Denver		COUVHD	79	47			79	47
32	CO	Denver	Rose Medical Center		COURSE	75	5			75	5
33	CO	Gr Junct	VA Medical Center - Grand Junction		COUGJV	45	102			45	102
34	WY	Cheyenne	VA Medical Center - Cheyenne		WYUZDX	40	148			40	148
35	CO	Aurora	Medical Center of Aurora		COUPAH	2	0			2	0
36					Library A	0	11			0	11
<b>TOTAL FOR PRIMARY ACCESS LIBRARIES</b>						<b>17723</b>	<b>11622</b>	<b>1010</b>	<b>2568</b>	<b>18733</b>	<b>14190</b>
<b>PERCENT OF TOTAL FOR DOCLINE/OCLC ACTIVITY:</b>											
<b>OTHER LIBRARIES</b>											
37					Library G	9596	1098	0	0	9596	1098
38	CO	Denver	Regis University		COURGS	0	159	5475	3514	5475	3673
39	CO	Denver	Univ CO Denver Health Sciences Library	COU	COUCOL	1366	4774	477	2882	1843	7656
40	WY	Laramie	University of Wyoming	WYU	WYUWYU	251	85	13477	8842	13728	8927
<b>TOTAL FOR OTHER LIBRARIES</b>						<b>11213</b>	<b>6116</b>	<b>19429</b>	<b>15238</b>	<b>30642</b>	<b>21354</b>
<b>GRAND TOTAL</b>						<b>28936</b>	<b>17738</b>	<b>20439</b>	<b>17806</b>	<b>49375</b>	<b>35544</b>

2007 CCML INTERLIBRARY LOAN SURVEY  
 TOTAL DOCLINE AND OCLC COMBINED  
 SORTED BY NUMBER OF ITEMS LOANED (F)

					A	B	C	D	E	F	
			OCLC	DOCLINE	BORROWED DOCLINE	LOANED DOCLINE	BORROWED OCLC	LOANED OCLC	BORROWED TOTAL	LOANED TOTAL	
STATE	CITY	INSTITUTION NAME	CODE	LIBID							
<b>PRIMARY ACCESS LIBRARIES</b>											
1	CO	Denver	Porter Adventist Hospital	DVH	COUPMD	2014	996	119	525	2133	1521
2	WY	Sheridan	VA Medical Center - Sheridan		WYUWYV	113	1459			113	1459
3	CO	Denver	Denver Med Libr Pres/St. Luke's Med Ctr	DMJ	COUDMS	1588	682	92	457	1680	1139
4	CO	Denver	National Jewish Health	DNB	COUZAL	411	842	39	125	450	967
5	CO	Gr Junct	St. Mary's Hospital and Medical Center	XVY	COUSMG	724	953	18	0	742	953
6	CO	Denver	Children's Hospital	CYB	COUTC	982	799	134	86	1116	885
7	CO	Englewood	Swedish Medical Center	DNS	COUZAM	583	544	13	297	596	841
8	CO	CO Sprgs	Penrose/St. Francis Health Services	CYG	COUPEA	538	816	25	25	563	841
9	CO	Fort Carson	Evans Army Community Hospital	AMB	COUUF	442	566	84	230	526	796
10	CO	Denver	AORN	DNF	COUAON	265	561	39	229	304	790
11	CO	CO Sprgs	U.S. Olympic Committee	USO	COUZFR	271	227	88	481	359	708
12	CO	Denver	Exempla Saint Joseph Hospital	DNJ	COUSJD	1269	443	57	71	1326	514
13	CO	Pueblo	Parkview Episcopal Medical Center	CQE	COUPEP	880	468	69	13	949	481
14	CO	Wheat Ridge	Exempla Lutheran Medical Center	DND	COULTR	733	481	82	0	815	481
15	CO	Greeley	North Colorado Medical Center	CYF	COUZCY	745	480	13	0	758	480
16	CO	Pueblo	CO Mental Health Inst Pueblo	CQH	COUPBC	389	207	104	29	493	236
17	CO	Denver	Centura St. Anthony Hospital		COUAHS	253	169			253	169
18	WY	Cheyenne	VA Medical Center - Cheyenne		WYUZDX	40	148			40	148
19	CO	Ft. Collins	Poudre Valley Health System	CO5	COUZFP	1098	114	34	0	1132	114
20	CO	Gr Junct	VA Medical Center - Grand Junction		COUGJV	45	102			45	102
21	CO	Lakewood	Gambro BCT Inc		COUCOB	270	97			270	97
22	CO	Boulder	Boulder Community Hospital		COUBOU	624	96			624	96
23	CO	Denver	CO Mental Health Inst Fort Logan		COUZFO	236	94			236	94
24					Library B	578	69			578	69
25	CO	Vail	Vail Valley Medical Center		COUVYA	944	63			944	63
26	CO	Denver	VA Medical Center - Denver		COUVHD	79	47			79	47
27					Library E	124	40			124	40
28	WY	Casper	Wyoming Medical Center		WYUNCY	288	27			288	27
29	CO	Gr Junct	Community Hospital - Grand Junction		COUZCF	226	12			226	12
30					Library A	0	11			0	11
31	CO	Denver	Rose Medical Center		COURSE	75	5			75	5
32					Library D	140	2			140	2
33	CO	Longmont	Longmont United Hospital		COULGM	270	1			270	1
34					Library F	163	1			163	1
35					Library C	321	0			321	0
36	CO	Aurora	Medical Center of Aurora		COUPAH	2	0			2	0
<b>TOTAL FOR PRIMARY ACCESS LIBRARIES</b>						<b>17723</b>	<b>11622</b>	<b>1010</b>	<b>2568</b>	<b>18733</b>	<b>14190</b>
<b>PERCENT OF TOTAL FOR DOCLINE/OCLC ACTIVITY:</b>											
<b>OTHER LIBRARIES</b>											
37					Library G	9596	1098			9596	1098
38	CO	Denver	Regis University		COURGS	0	159	5475	3514	5475	3673
39	CO	Denver	Univ CO Denver Health Sciences Library	COU	COUCOL	1366	4774	477	2882	1843	7656
40	WY	Laramie	University of Wyoming	WYU	WYUWY	251	85	13477	8842	13728	8927
<b>TOTAL FOR OTHER LIBRARIES</b>						<b>11213</b>	<b>6116</b>	<b>19429</b>	<b>15238</b>	<b>30642</b>	<b>21354</b>
<b>GRAND TOTAL</b>						<b>28936</b>	<b>17738</b>	<b>20439</b>	<b>17806</b>	<b>49375</b>	<b>35544</b>



2007 CCML INTERLIBRARY LOAN SURVEY  
DOCLINE NET LENDER/ NET BORROWER DETERMINATION (D)  
BORROWING AND LENDING WITHIN CCML ONLY

					A	B	C	D	E
					BORROWED(B)	LOANED(L)	B+L	B/(B+L)	(B+L)
					CCML ONLY	CCML ONLY			/(BT+LT)
			DOCLINE		DOCLINE	DOCLINE			
	STATE	CITY	INSTITUTION NAME	LIBID	BORROWS	LOANS			
1	CO	Aurora	Medical Center of Aurora	COUPAH	0	0	0	-	0.00%
2				Library A	0	2	2	-	0.02%
3	CO	Denver	National Jewish Health	COUZAL	77	577	654	0.12	5.20%
4	CO	Gr Junct	VA Medical Center - Grand Junction	COUGJV	9	44	53	0.17	0.42%
5	CO	CO Sprgs	Penrose/St. Francis Health Services	COUPEA	214	693	907	0.24	7.21%
6	WY	Chevenne	VA Medical Center - Chevenne	WYUZDX	16	51	67	0.24	0.53%
7	CO	Denver	AORN	COUAON	102	260	362	0.28	2.88%
8	CO	Greeley	North Colorado Medical Center	COUZCY	163	335	498	0.33	3.96%
9	CO	Fort Carson	Evans Army Community Hospital	COUFC	139	273	412	0.34	3.28%
10				Library G	74	138	212	0.35	1.69%
11	CO	Gr Junct	St. Mary's Hospital and Medical Center	COUSMG	307	494	801	0.38	6.37%
12	CO	Denver	Centura St. Anthony Hospital	COUAHS	109	140	249	0.44	1.98%
13	CO	CO Sprgs	U.S. Olympic Committee	COUZFR	78	96	174	0.45	1.38%
14	CO	Wheat Ridge	Exempla Lutheran Medical Center	COULTR	335	406	741	0.45	5.89%
15	WY	Sheridan	VA Medical Center - Sheridan	WYUWYV	16	19	35	0.46	0.28%
16	CO	Denver	Denver Med Libr Pres/St. Luke's Med Ctr	COUDMS	452	527	979	0.46	7.78%
17	CO	Pueblo	CO Mental Health Inst Pueblo	COUPBC	174	192	366	0.48	2.91%
					<b>NET LENDERS -- UP FROM HERE</b>				
					<b>NET BORROWERS -- DOWN FROM HERE</b>				
18	CO	Denver	Porter Adventist Hospital	COUPMD	658	641	1299	0.51	10.33%
19	CO	Denver	Children's Hospital	COUTCH	307	282	589	0.52	4.68%
20	CO	Denver	VA Medical Center - Denver	COUVDH	39	35	74	0.53	0.59%
21	CO	Englewood	Swedish Medical Center	COUZAM	194	165	359	0.54	2.85%
22	CO	Lakewood	Gambro BCT Inc	COUCOB	92	67	159	0.58	1.26%
23	CO	Denver	Exempla Saint Joseph Hospital	COUSJD	598	358	956	0.63	7.60%
24	CO	Denver	CO Mental Health Inst Fort Logan	COUZFO	68	39	107	0.64	0.85%
25	CO	Pueblo	Parkview Episcopal Medical Center	COUPEP	457	238	695	0.66	5.53%
26				Library B	35	11	46	0.76	0.37%
27	CO	Boulder	Boulder Community Hospital	COUBOU	233	70	303	0.77	2.41%
28				Library E	40	11	51	0.78	0.41%
29	CO	Denver	Rose Medical Center	COURSE	21	5	26	0.81	0.21%
30	CO	Vail	Vail Valley Medical Center	COUVYA	112	20	132	0.85	1.05%
31	CO	Ft. Collins	Poudre Valley Health System	COUZFP	528	83	611	0.86	4.86%
32	WY	Casper	Wyoming Medical Center	WYUNCY	83	11	94	0.88	0.75%
33	CO	Gr Junct	Community Hospital - Grand Junction	COUZCF	145	5	150	0.97	1.19%
34	CO	Lomgmont	Longmont United Hospital	COULGM	177	1	178	0.99	1.42%
35				Library C	154	0	154	1.00	1.22%
36				Library D	51	0	51	1.00	0.41%
37				Library F	32	0	32	1.00	0.25%
					6289	6289			
				Other Libraries	546	892			
					6835	7181			
38	CO	Denver	Univ CO Denver Health Sciences Library	COUCOL	244	2172			
39	WY	Laramie	University of Wyoming	WYUWY	25	130			
40	CO	Denver	Regis University	COURGS	0	97			
					7104	9483			

## DOCLINE ONLY

## ANALYSIS OF GEOGRAPHIC SOURCE OF MATERIAL BORROWED AND LOANED 1997 TO 2007

	A	B	C	D	E	F	G	H	I	J	K	L
PRIMARY ACCESS LIBRARIES	1997	% Total	2002	% Total	2007	% Total	1997	% Total	2002	% Total	2007	% Total
	N=57		N=51		N=36		N=57		N=51		N=36	
	BORROWED --		BORROWED --		BORROWED --		LOANED ----		LOANED ----		LOANED ----	
TOTAL CO-WY BORROWED WITHIN GROUP	30,484	60%	18,361	53%	7,275	30%	30,484	90%	18,361	73%	6,921	61%
% of change:			-40%		-60%				-40%		-62%	
IN-STATE RESOURCE LIBRARIES												
COLORADO : COUCOL - Univ of CO Denver Health Sci Ctr	5,976		3,272		2,318		783		905		210	
WYOMING : WYUWY - Univ of Wyoming	719		385		222		107		14		46	
TOTAL:	6,695	13%	3,657	11%	2,540	10%	890	3%	919	4%	256	2%
% of change:			-45%		-31%				3%		-72%	
IN REGION RESOURCE LIBRARIES												
MISSOURI : MOUSTL - Saint Louis Univ	317		399		23		0		1		-	
MOUWSL - Washington Univ	1,727		933		759		0		0		-	
MOUMCO - Univ of Missouri-Col	801		226		237		0		0		26	
KANSAS : KSUKAN - Univ of Kansas	658		283		47		93		2		-	
NEBRASKA : NEUNEB - Univ of Nebraska Med Ctr	602		252		199		67		44		51	
NEUCRU - Creighton Univ	280		143		137		0		3		1	
UTAH : UTUUTA -Univ of Utah	623		503		340		0		10		11	
TOTAL:	5,008	10%	2,739	8%	1,742	7%	160	0%	60	0%	89	1%
% of change:			-45%		-36%				-63%		48%	
NATIONAL LIBRARY OF MEDICINE* MDUNLM - NLM	1,919	4%	1,119	3%	634	3%	0		0		-	
% of change:			-42%		-43%							
ALL OTHER LIBRARIES FROM NATIONAL	6,179	12%	8,605	25%	12,207	50%	2,098	6%	5,827	23%	3,992	35%
DOCLINE ROUTING TABLE % of change:			39%		42%				178%		-31%	
<b>PRIMARY ACCESS LIBRARIES TOTAL:</b>	<b>50,649</b>		<b>34,481</b>		<b>24,398</b>		<b>33,996</b>		<b>25,167</b>		<b>11,258</b>	
% of change:			-32%		-29%				-26%		-55%	
* One CCML Library in 2007 borrowed 3551 and was excluded from the total as an outlier												